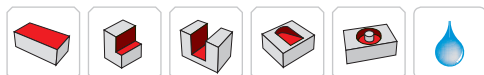
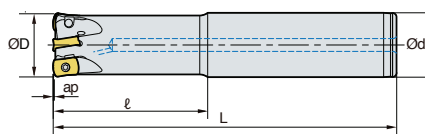


HFMDS-LN06 new



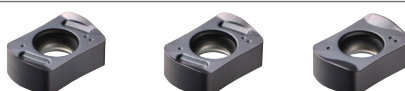
• AR: -9°
• RR: 10°~15°

(mm)

Designation		ØD	Ød	ℓ	L	ap	
HFMDS 021R-3C20-100-LN06	3	21	20	30	100	1.0	0.21
021R-3C20-130-LN06	3	21	20	40	130	1.0	0.27
021R-3C20-160-LN06	3	21	20	40	160	1.0	0.34
021R-3C20-200-LN06	3	21	20	40	200	1.0	0.42
025R-4C25-100-LN06	4	25	25	40	100	1.0	0.33
025R-4C25-140-LN06	4	25	25	60	140	1.0	0.46
025R-4C25-180-LN06	4	25	25	100	180	1.0	0.58
025R-4C25-250-LN06	4	25	25	150	250	1.0	0.67
026R-4C25-100-LN06	4	26	25	30	100	1.0	0.34
026R-4C25-140-LN06	4	26	25	40	140	1.0	0.48
026R-4C25-180-LN06	4	26	25	40	180	1.0	0.63
026R-4C25-250-LN06	4	26	25	40	250	1.0	0.72
032R-5C32-150-LN06	5	32	32	70	150	1.0	0.82
032R-5C32-200-LN06	5	32	32	120	200	1.0	1.08
032R-5C32-250-LN06	5	32	32	150	250	1.0	1.20
033R-5C32-150-LN06	5	33	32	40	150	1.0	0.82
033R-5C32-200-LN06	5	33	32	40	200	1.0	1.08
033R-5C32-250-LN06	5	33	32	40	250	1.0	1.20
035R-5C32-150-LN06	5	35	32	40	150	1.0	0.87
035R-5C32-200-LN06	5	35	32	40	200	1.0	1.13
035R-5C32-250-LN06	5	35	32	40	250	1.0	1.25
040R-6C32-150-LN06	6	40	32	40	150	1.0	0.97
040R-6C32-200-LN06	6	40	32	40	200	1.0	1.28
040R-6C32-250-LN06	6	40	32	40	250	1.0	1.38

Available inserts

LNMX-ML LNMX-MF LNMX-MM



Designation	Coated				page
	PC2510	PC3700	PC5300	PC5400	
LNMX 060310R-ML			●	●	E11
060310R-MF	●	●	●	●	
060310R-MM	●	●	●	●	

Parts

Specification		
Ø16~Ø40	FTNA0306	TW09S

Available inserts E11